

Control Panel icons:

- Backlight Control
- Boot Run Setup
- Buzzer Settings
- Certificates
- CRT Display Settings
- Date/Time
- Dialing
- Display
- Input Panel
- Internet Options
- Keyboard
- Mouse
- Network and Dial-up Co...
- Owner
- Password
- PC Connection
- Product Info
- Regional Settings
- Registry Preserve
- Remove Programs
- Storage Manager
- Stylus
- System
- Volume & Sounds**

### Volume & Sounds Properties

Volume Sounds

▲ Loud

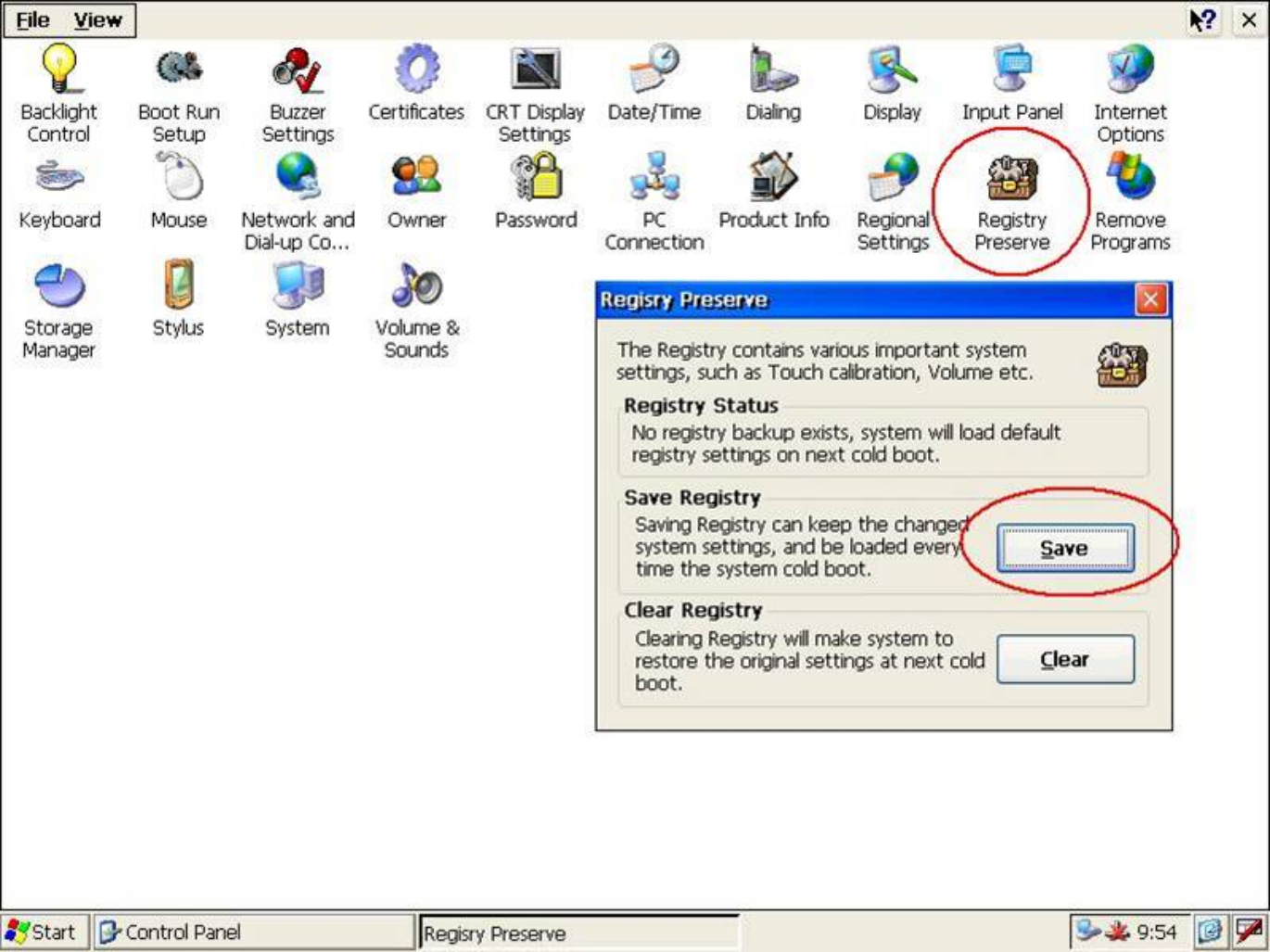
**Enable sounds for:**

- Events (warnings, beeps and system events)
- Applications (program specific and all other sounds)
- Notifications (alarms, appointments and reminders)

**Enable clicks and taps for:**

- Key clicks:  Loud  Soft
- Screen taps:  Loud  Soft

▼ Soft



Backlight Control



Keyboard



Storage Manager



Boot Run Setup



Mouse



Stylus



Buzzer Settings



Network and Dial-up Co...



System



Certificates



Owner



Volume & Sounds



CRT Display Settings



Password



Date/Time



PC Connection



Dialing



Product Info



Display



Regional Settings



Input Panel



Registry Preserve



Internet Options



Remove Programs

### Registry Preserve

The Registry contains various important system settings, such as Touch calibration, Volume etc.



#### Registry Status

No registry backup exists, system will load default registry settings on next cold boot.

#### Save Registry

Saving Registry can keep the changed system settings, and be loaded every time the system cold boot.

Save

#### Clear Registry

Clearing Registry will make system to restore the original settings at next cold boot.

Clear

Start

Control Panel

Registry Preserve

9:54